

COLONNADE INSTALLATION INSTRUCTIONS



List of Materials

See Packing List

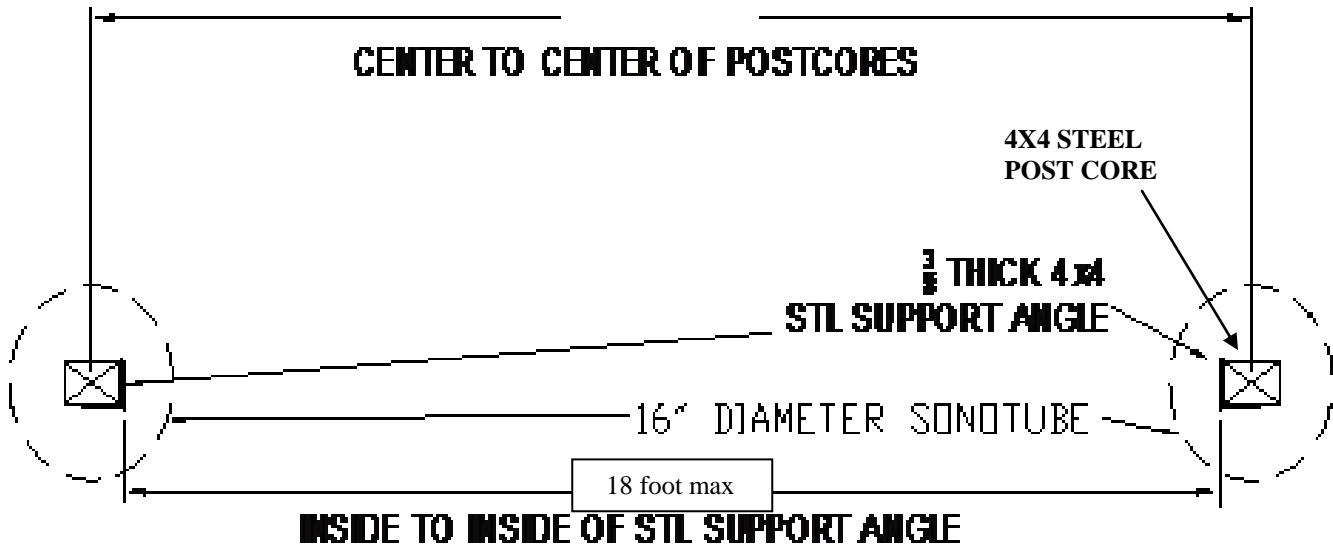
Tools Required

Drill with a 1/2" metal bit 10" long
Wrenches
Clamps
Driver for screws and bolts
Level
Tape measure

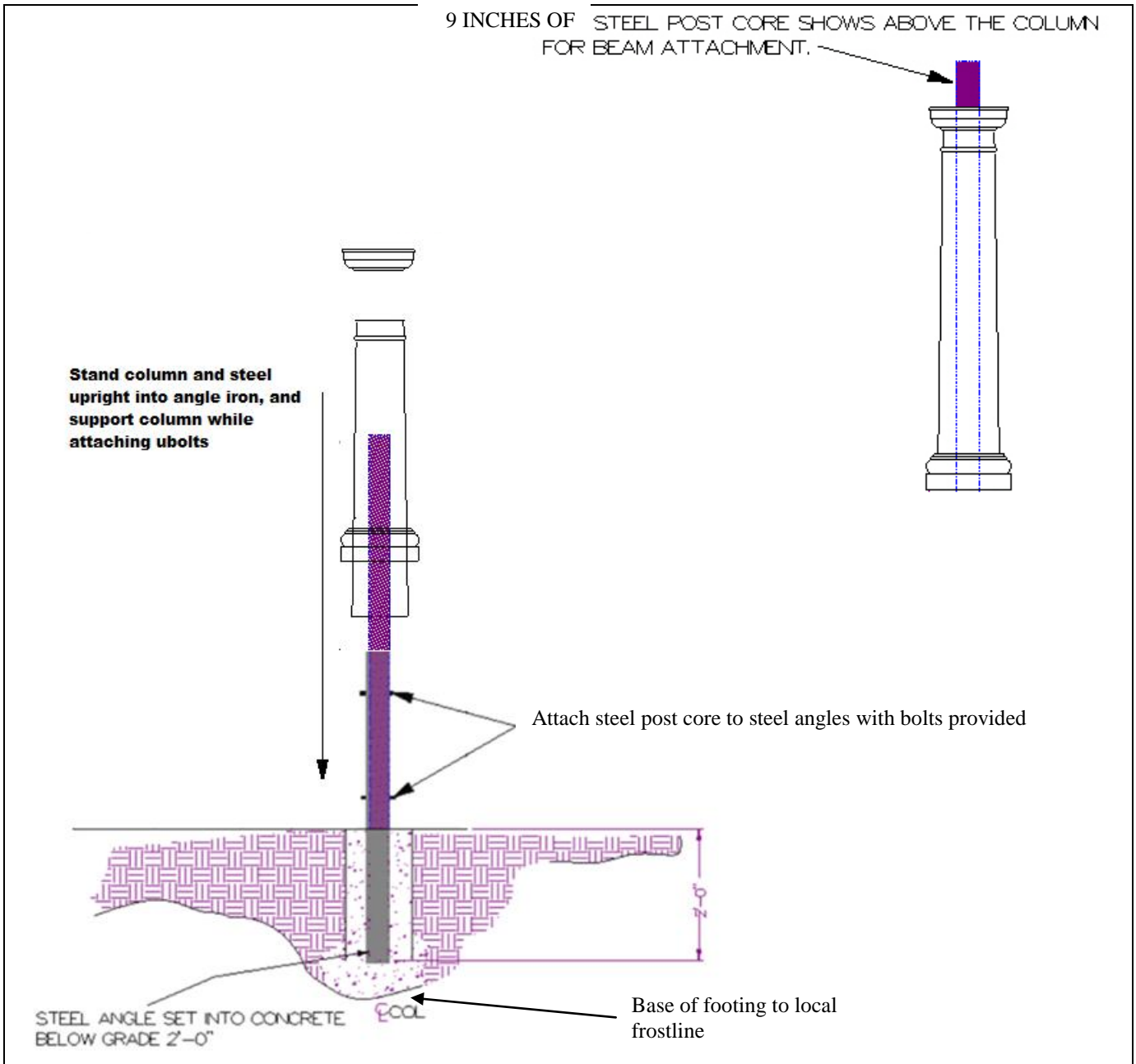
Metal saw (sawzall with metal blade)
Two eight foot step ladders

COLONNADE
INSTALLATION INSTRUCTIONS

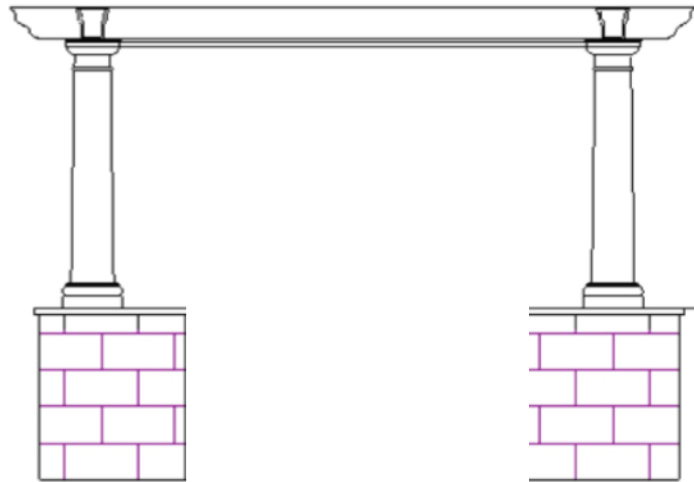
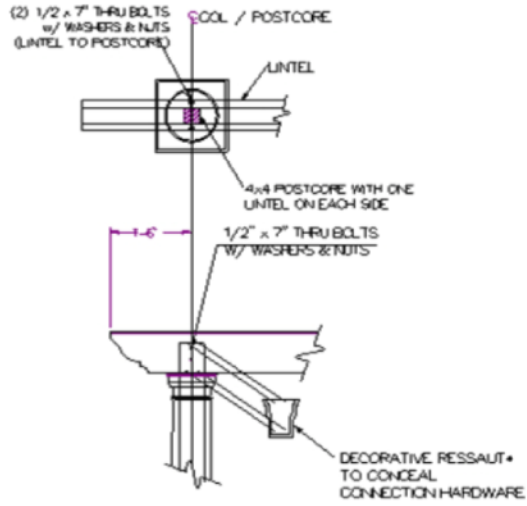
FOUNDATION LAYOUT



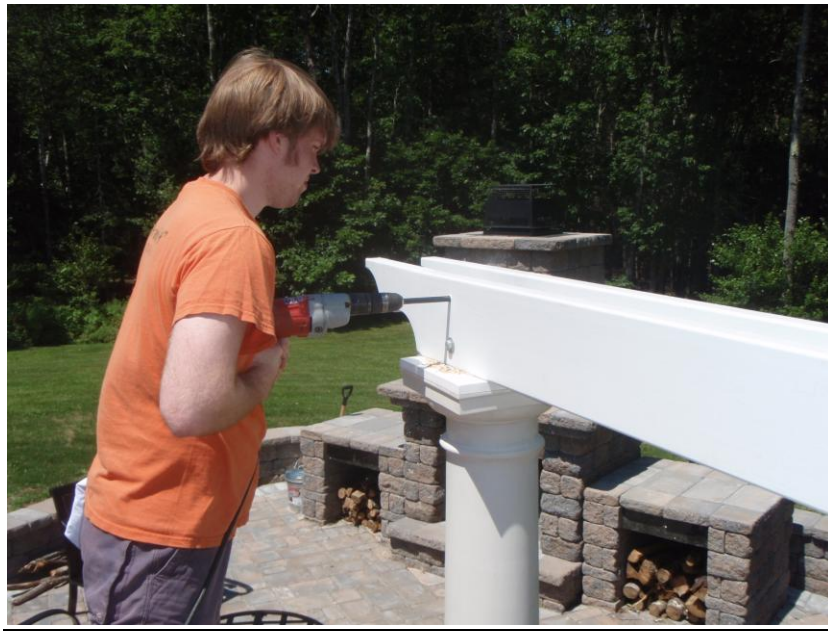
COLONNADE INSTALLATION INSTRUCTIONS COLUMN INSTALLATION



COLONNADE
INSTALLATION INSTRUCTIONS
BEAM ASSEMBLY INSTALLATION



COLONNADE
INSTALLATION INSTRUCTIONS
BEAM ASSEMBLY INSTALLATION

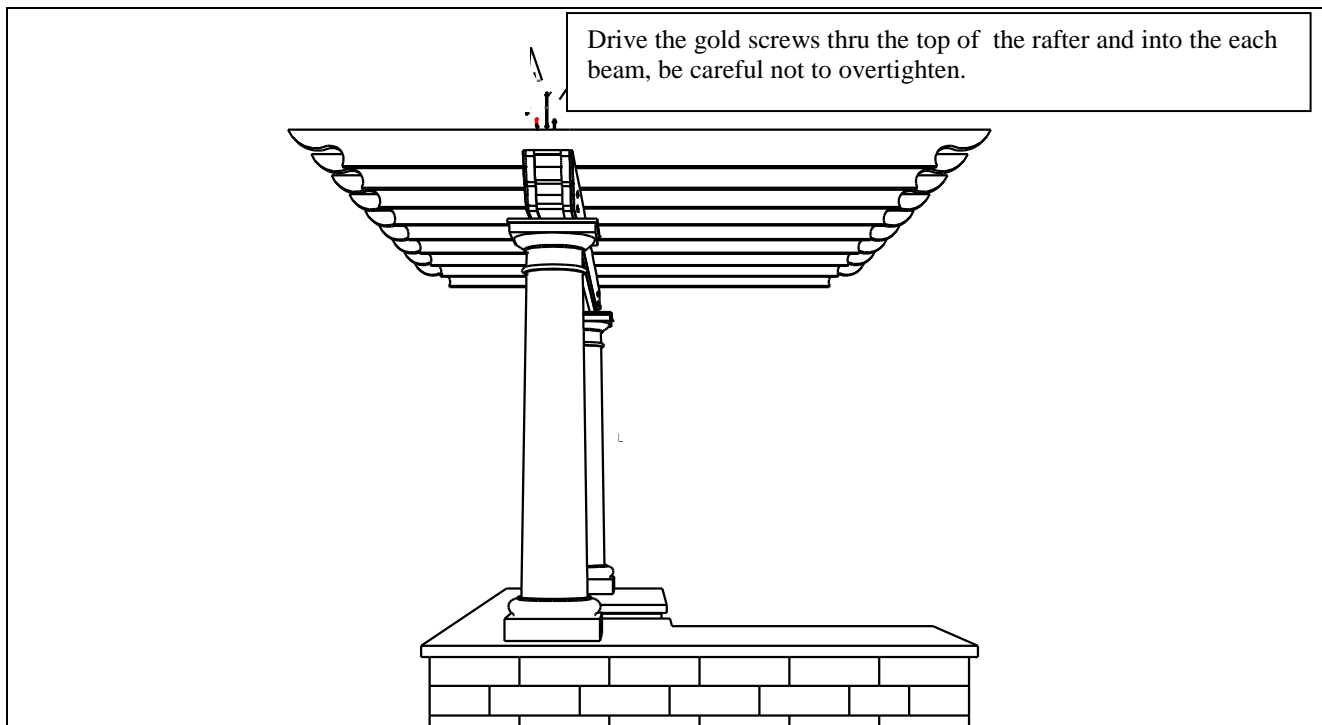


HOLD BEAMS IN PLACE AGAINST THE POST CORE WITH A CLAMP. USE EIGHT INCH LONG $\frac{1}{2}$ " DRILL BIT TO DRILL THRU EACH LINTEL AND THE STEEL POST CORE IN A SINGLE PASS.

COLONNADE

INSTALLATION INSTRUCTIONS

RAFTER INSTALLATION



Predrill holes in the top of the rafters on the ground first then start the long gold screws into the holes.

COLONNADE
INSTALLATION INSTRUCTIONS
RAFTER INSTALLATION



Leave protective plastic on the rafters when installing to help keep rafters clean of handprints. Set back screw first, check level and set front screw. Be careful not to overtighten.



Set then and level the leftmost and rightmost rafters first. Then set the backmost and frontmost purlin. Double check level on both rafters and purlins. Begin installing the remaining rafters and then install the remaining purlins.

COLONNADE
INSTALLATION INSTRUCTIONS
RAFTER and PURLIN SPACING

Space the outermost two rafters 10 and 1/2 inches in from the tip of each end of the beam. Position each of the remaining rafters equally spaced between the two outermost rafters.

Fasten the purlins using the 5 inch self drilling screws. Install one screw in each purlin along each of the outside rafters. Use the remaining screws to fasten the middle of the purlins to one of the middle rafters.

Space the first purlin 10 and 1/2 inches in from the front tip of the rafters. Next space the last purlin 10 and 1/2 inches in from the back tip of the rafters. Then position each of the remaining purlins equally spaced.