

16 X 20 PERGOLA INSTALLATION INSTRUCTIONS



List of Materials

See packing list for Materials List

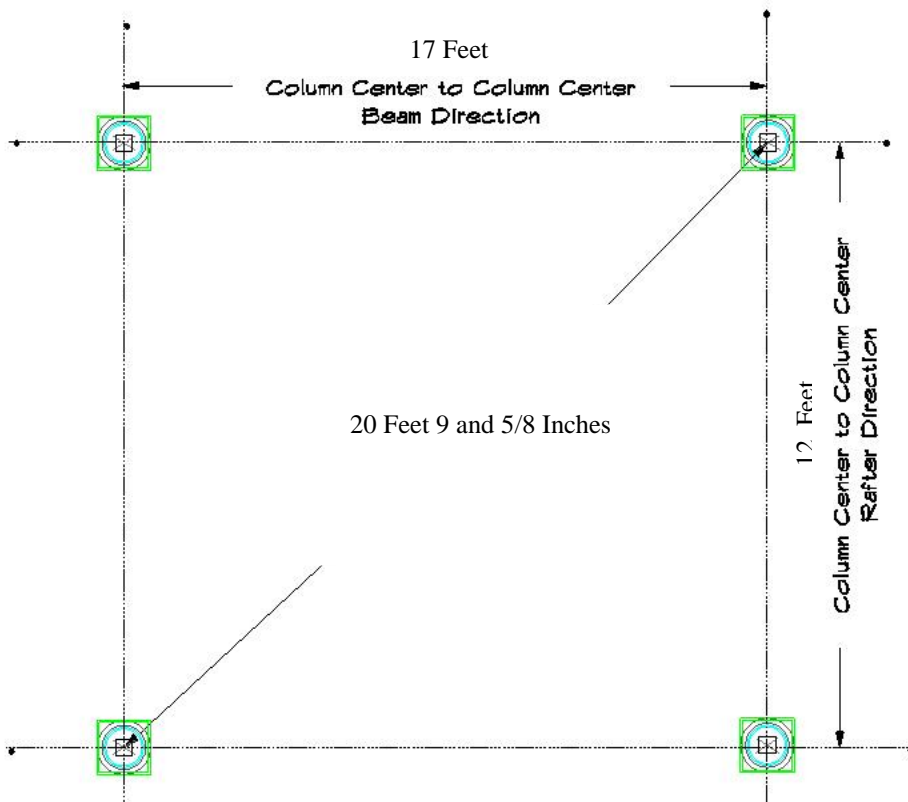
Tools Required

Driver for screws
Level
Tape measure
Wrenches
Metal saw (sawzall with metal blade)
Safety glasses

Be sure to follow the safety instructions for all the tools

16 X 20 PERGOLA INSTALLATION INSTRUCTIONS

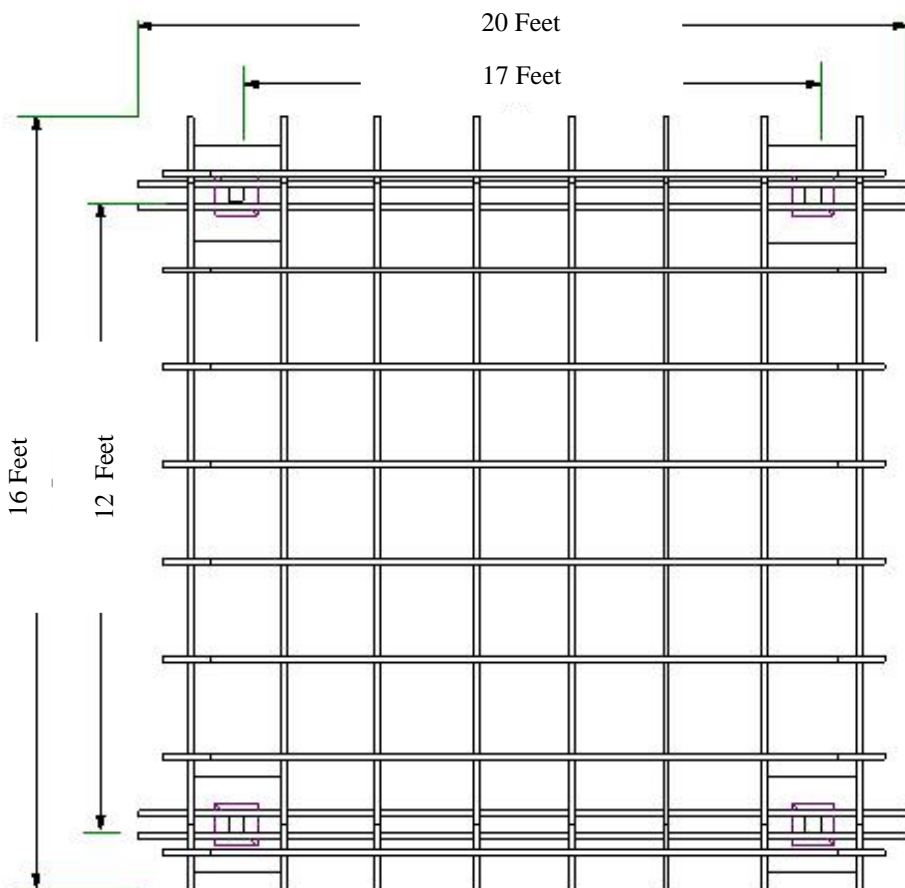
COLUMN LAYOUT



The pergola beams are 20 feet long and the pergola rafters are 16 feet long.

In your column layout, the 17 foot dimension should point in the direction that you want the beams to be run.

The 12 foot dimension points in the direction that the rafters will run.

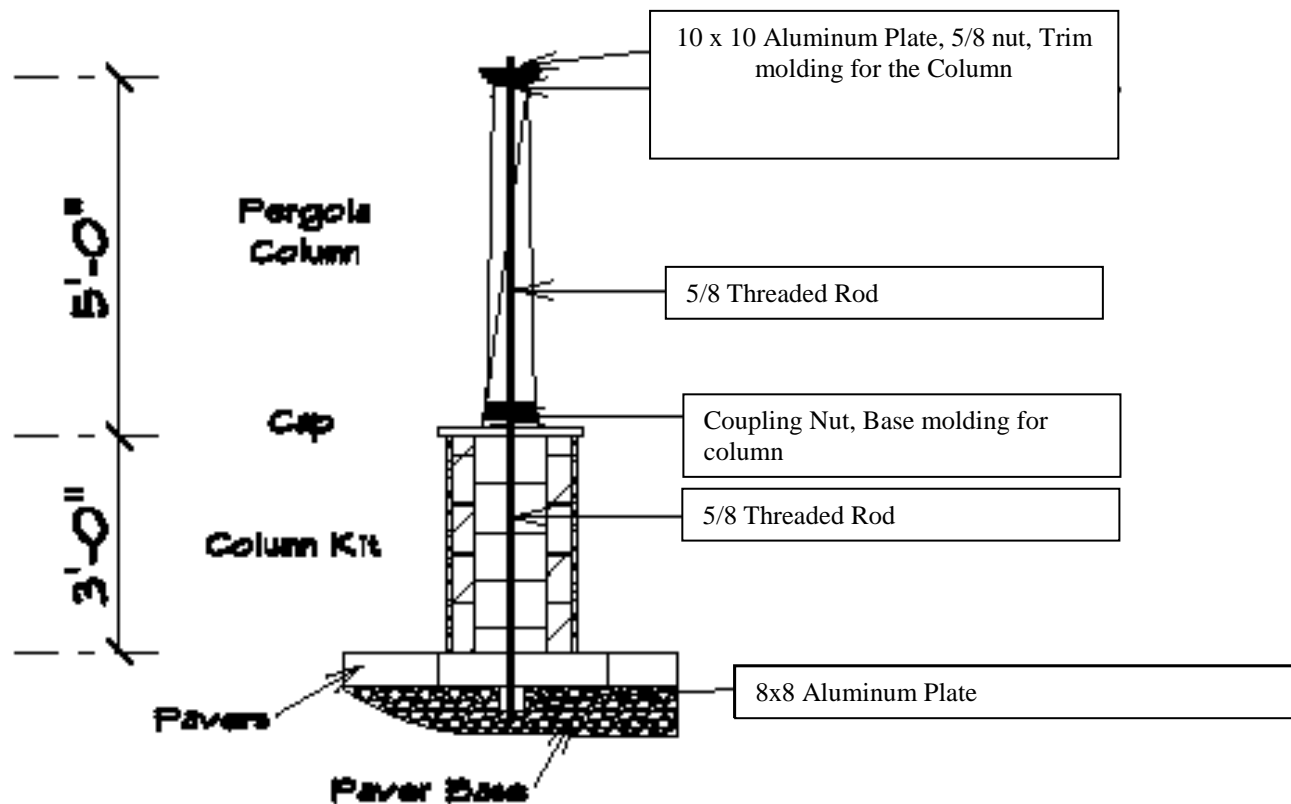


When installed the 20 foot **beam** will extend beyond the 17 foot column centers a foot and a half on each side.

When installed the 16 foot **rafters** will extend beyond the 12 foot column centers 2 feet on each side.

16 x 20 PERGOLA INSTALLATION INSTRUCTIONS

5' COLUMN ASSEMBLY INSTALLATION WITH CAMBRIDGE COLUMN KIT



Cut two of the 6 foot sections of threaded rod into 4 three foot sections, you will need at least 2 inches of rod protruding above the cap on the paver pedestal.

Insert threaded rod into steel bottom plate with nut on each side of the plate. Do this for each of the four plates

Position the four plates and rod assemblies as per the footing layout.

16 x 20 PERGOLA INSTALLATION INSTRUCTIONS



Install the Cambridge Column Kit following the instructions from Cambridge Paving Stones. If using a cap stone, drill a 5/8 or larger hole into the center and slide over the threaded rod.



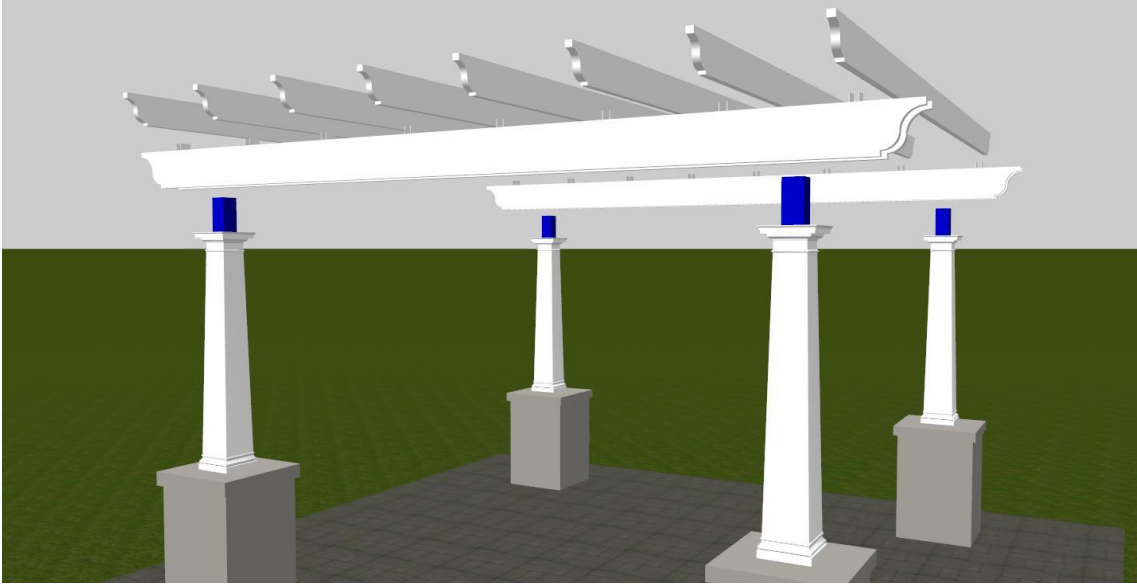
Slide column over threaded rod and attach final rod section. Slide Cap and Base onto column before attaching 10 inch aluminum top plate. Check that column is plumb then **Tightly** secure top plate using provided nut and washer to complete column assembly.

16 x20 PERGOLA
INSTALLATION INSTRUCTIONS
BEAM INSTALLTION

Center Beam Assembly over Column Assembly. Threaded Rod should be approx centered in each of the two pockets in the beam. Measure, mark and drill a 5/8 hole to receive the threaded rod in the fiberglass cap so that it is centered onto pocket. Secure with the flat washer and 5/8 nut. **Do Not Over Tighten.**

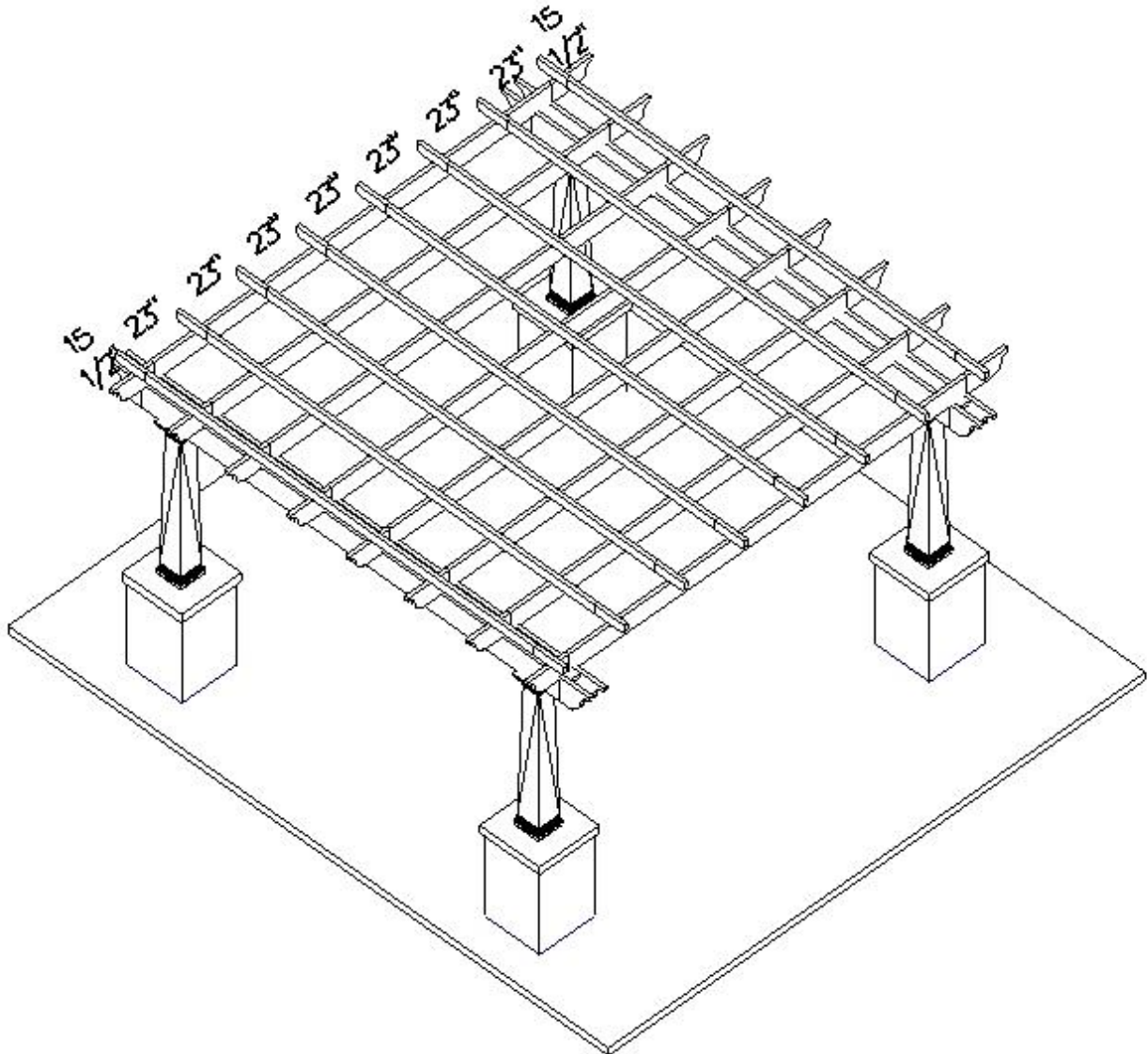


16 x 20 PERGOLA
INSTALLATION INSTRUCTIONS
RAFTER and PURLIN INSTALLATION



Align rafters with the spacers between the Beam Assembly.
Secure by driving the 9 inch wood screw up thru the bottom of the spacer and into the rafter above.
Be careful not to over tighten

16x20 PERGOLA
INSTALLATION INSTRUCTIONS
RAFTER and PURLIN INSTALLATION



Once the rafters are installed, install the 2x4 Purlins using the 5 inch self drilling screws. Install one screw in each purlin along each of the outside rafters. Use the remaining screws to fasten the middle of the purlins to one of the middle rafters.

First install the two outermost purlins 15 inches in from the tip of the rafter. Equally space each of the remaining purlins between the two outermost purlins

Be careful not to slide the purlins across the top of the rafters as you set them in place as it may scratch the purlins. You may wish to leave the protective plastic on the rafters until the purlins are ready to install.