



## CONSTRUCTION CROSS-SECTION DRAWINGS AND GUIDE SPECIFICATIONS FOR CAMBRIDGE INTERLOCKING PAVINGSTONES

### Index of Drawings

NO.	DESCRIPTION	▲	NO.	DESCRIPTION
01	Residential Driveway With Concrete Edges	▲	19	Fountain
02	Patio/Sidewalk/Plaza On Compacted Aggregate Base	▲	20	Roof Deck Over Habitable Space
03	Patio/Sidewalk/Plaza On Concrete Base	▲	21	Roof Deck Over Uninhabited Space
04	Street/Parking Lot/Residential Driveway Overlay On Existing Concrete Pavement	▲	22	Parking Garage Over Uninhabited Space – Expansion Joint
05	Street/Parking Lot/Residential Driveway Overlay On Existing Asphalt Pavement	▲	23	Parking Garage Over Inhabited/ Uninhabited Space – Drain
06	Heated Sidewalk/Driveway	▲	24	Parking Garage Over Inhabited Space – Expansion Joint
07	Interior Concrete Base	▲	25	Bridge Deck
08	Steps	▲	26	Gas Station On Cement Treated Base
09	Street/Parking Lot On Compacted Gravel Base	▲	27	Port/Industrial/Airfield Pavement With Cement Treated Base
10	Concrete Curb And Gutter	▲	28	Port/Industrial Pavement On Existing Asphalt Or Concrete
11	Crosswalk On Compacted Aggregate Base	▲	29	Airfield Pavement With Cement Treated Or Asphalt Base
12	Crosswalk On Concrete Base	▲	30	Airfield Pavement On Existing Asphalt Or Concrete
13	Crosswalk On Asphalt Or Cement Treated Base	▲	31	Turfstone – Firelane/Driveway/ Intermittent Parking
14	Utility Structure	▲	32	Turfstone – Slope Protection
15	Utility Structure – Value Box/Pull Box/ Lamphole	▲	33	Turfstone – Riparian Stabilization
16	Catch Basin	▲	34	Ditch Liner For Intermittent Flows
17	Tree Pit – Non-Compacted Root Zone	▲	35	Turfstone – Boat Ramp
18	Slope Protection	▲		

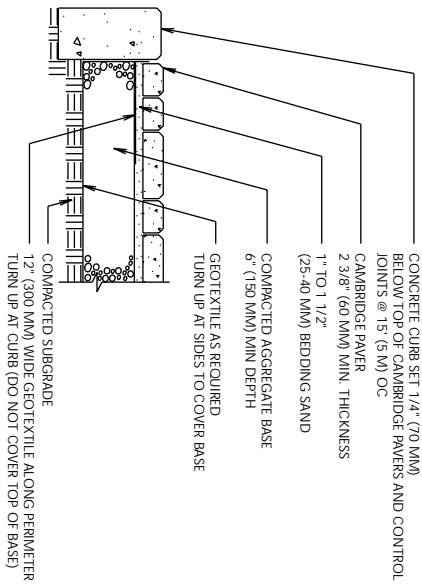
Cambridge Pavers, Inc. ▲ PO Box 157 ▲ Lyndhurst, NJ 07071.0157

**Order/Dispatch:**  
Fax 201.933.2230

**Phone:**  
201.933.5000

**Administration Fax:**  
201.933.5532

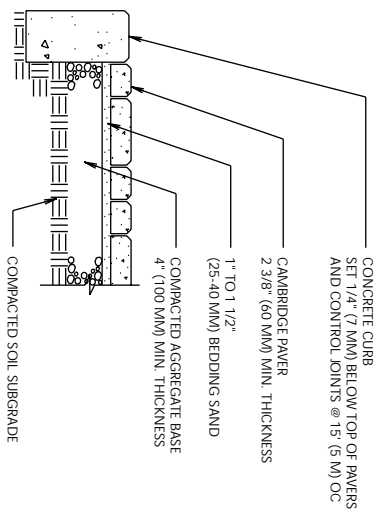
**Find Us Online:**  
[www.cambridgepavers.com](http://www.cambridgepavers.com)



- NOTES:
1. THICKNESS OF AGGREGATE BASE WILL VARY WITH SUBGRADE CONDITIONS AND CLIMATE. COLDER CLIMATES MAY REQUIRE THICKER BASES.
  2. CAMBRIDGE PAVERS SHOULD BE PLACED ON A CEMENT TREATED BASE IF SOIL IS EXTREMELY WEAK OR CONSTANTLY SATURATED. PAVERS CAN BE OVERLAIN OR INLAIN ON EXISTING ASPHALT OR CONCRETE DRIVEWAYS.
  3. PLASTIC, STEEL, ALUMINUM OR PRECAST CONCRETE EDGING MAY BE USED.

**RESIDENTIAL DRIVEWAY WITH CONCRETE EDGES**

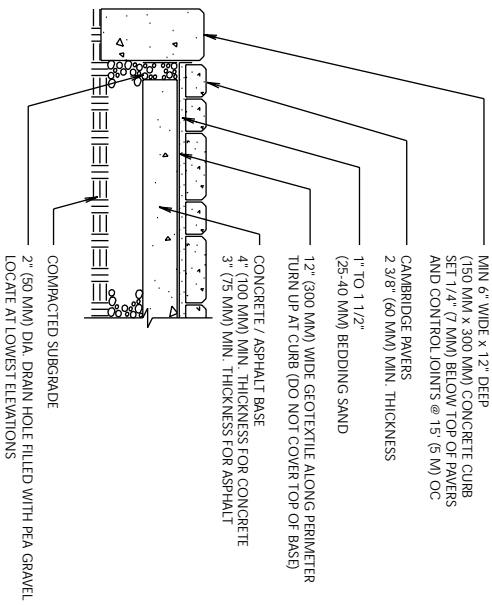
DRAWING NO.  
CAMBRIDGE-01



- NOTE:
1. THICKNESS OF BASE WILL VARY WITH SUBGRADE CONDITIONS AND CLIMATE. COLDER CLIMATES MAY REQUIRE THICKER BASES.

**PATIO / SIDEWALK / PLAZA ON COMPACTED AGGREGATE BASE**

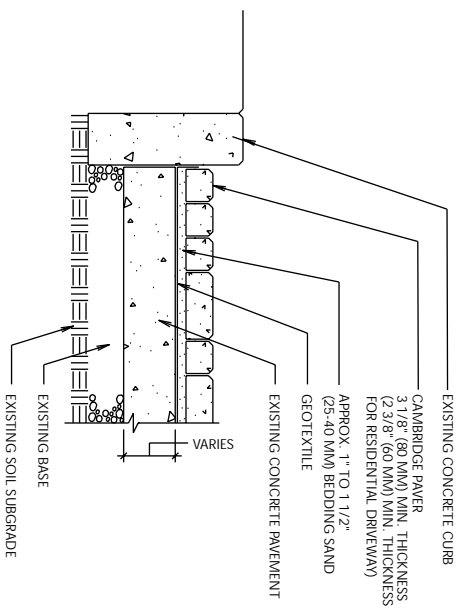
DRAWING NO.  
CAMBRIDGE-02



- NOTE:
1. THICKNESS OF BASE WILL VARY WITH SUBGRADE CONDITIONS AND CLIMATE. COLDER CLIMATES MAY REQUIRE THICKER BASES.

**PATIO / SIDEWALK / PLAZA ON CONCRETE BASE**

DRAWING NO.  
CAMBRIDGE-03

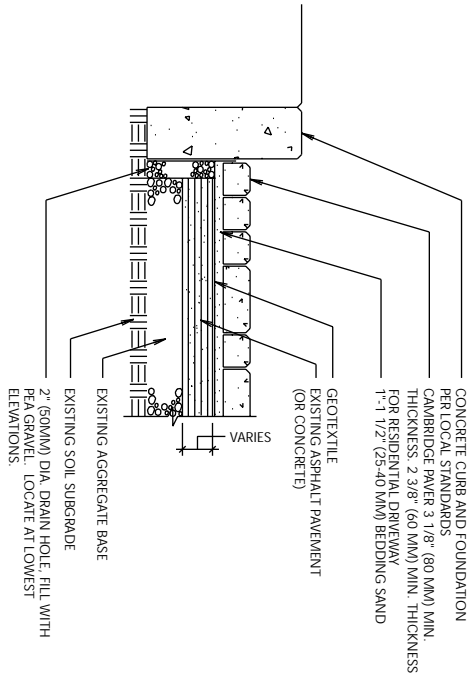


- NOTE:
1. DRAIN BEDDING SAND OF EXCESS MOISTURE THROUGH PAVEMENT AT LOWEST POINT OR AT CATCH BASIN(S). SEE DRAWING NO. CAMBRIDGE-03.

**STREET / PARKING LOT / RESIDENTIAL DRIVEWAY OVERLAY ON EXISTING CONCRETE PAVEMENT**

DRAWING NO.  
CAMBRIDGE-04

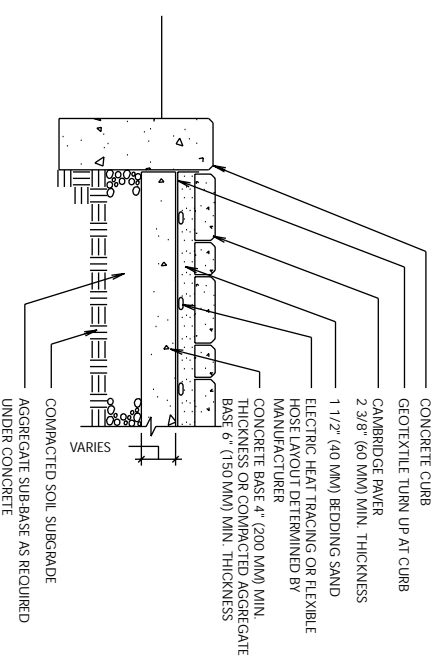
NOTE: 1. DRAIN BEDDING SAND OF EXCESS MOISTURE THROUGH PAVEMENT AT LOWEST POINTS AS SHOWN OR AT CATCH BASIN(S).



**STREET/PARKING LOT/RESIDENTIAL DRIVEWAY  
OVERLAY ON EXISTING ASPHALT PAVEMENT**

DRAWING NO.  
CAMBRIDGE-05

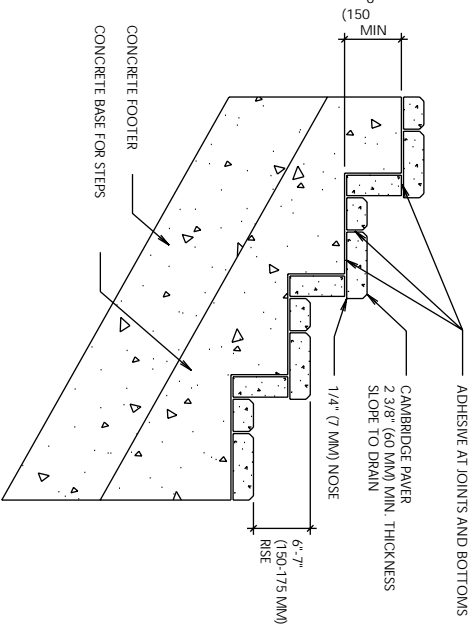
- NOTES:
- HEATED ASSEMBLIES CAN BE PLACED ON A CEMENT TREATED BASE OR COMPACTED GRAVEL.
  - ON CONCRETE BASE PROVIDE REA GRAVEL-FILLED WEEP HOLES) AT LOWEST POINT(S).
  - COVER TOP OF HOLE WITH GEOTEXTILE.
  - ON AN AGGREGATE BASE, GEOTEXTILE IS ONLY REQUIRED ALONG THE CURB.
  - FLEXIBLE HOSE CAN BE PLACED IN TOP LAYER OF AGGREGATE BASE.



**HEATED SIDEWALK / DRIVEWAY**

DRAWING NO.  
CAMBRIDGE-06

NOTE: 1. USE OF MORTAR IS NOT RECOMMENDED IN PLACE OF ADHESIVE.

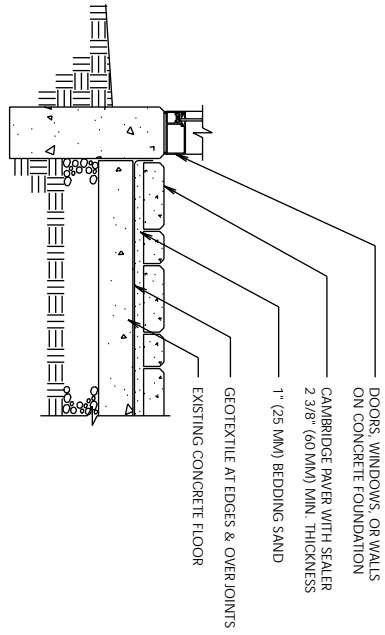


**STEPS WITH CAMBRIDGE PAVERS**

DRAWING NO.  
CAMBRIDGE-08

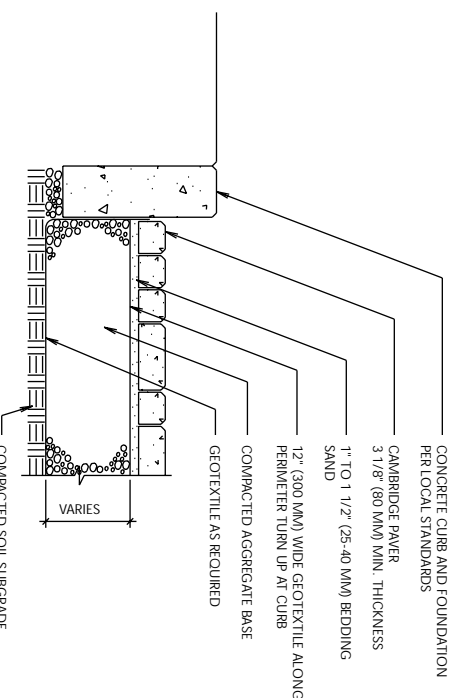
**INTERIOR  
CONCRETE BASE**

DRAWING NO.  
CAMBRIDGE-07



DRAWING NO.  
CAMBRIDGE-07

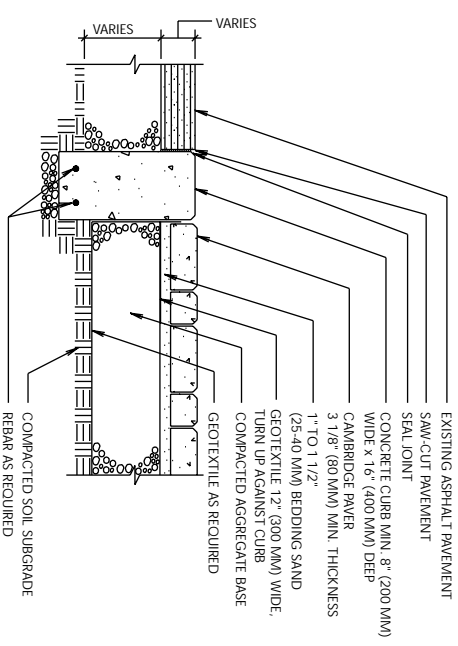
- NOTES:
1. DRAIN MAY BE NECESSARY IN SLOW DRAINING SUBGRADE.
  2. BASE THICKNESS VARIES WITH TRAFFIC, CLIMATE, AND SUBGRADE CONDITIONS. COLDER CLIMATES AND WEAK SOILS MAY REQUIRE THICKER BASES.
  3. DO NOT COVER ENTIRE TOP OF AGGREGATE BASE WITH GEOTEXTILE.



**STREET / PARKING LOT ON COMPACTED GRAVEL BASE**

DRAWING NO. CAMBRIDGE-09

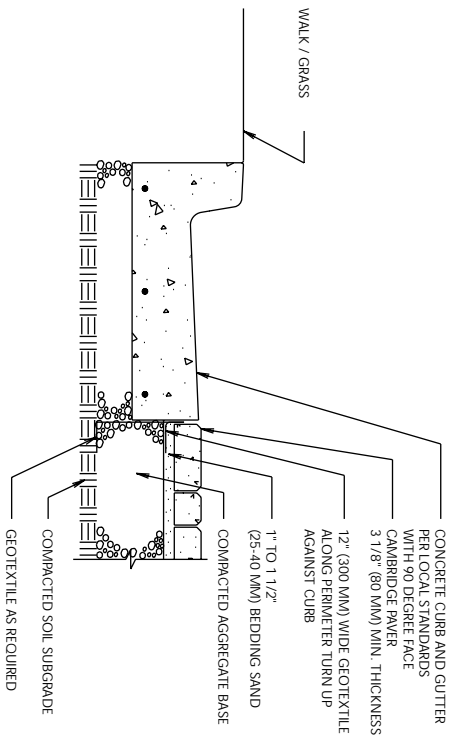
- NOTES:
1. BASE THICKNESS VARIES WITH TRAFFIC, CLIMATE, AND SUBGRADE CONDITIONS.
  2. CONCRETE CURBS DO NOT DEFLECT TO THE SAME DEPTH AS CAMBRIDGE PAVERS OR EXISTING ASPHALT. THIS DETAIL IS NOT RECOMMENDED FOR OTHER THAN LOW VOLUME RESIDENTIAL STREETS.
  3. THICKENING ASPHALT PAVEMENT ADJACENT TO CONCRETE CURB IS RECOMMENDED.



**CROSSWALK ON COMPACTED AGGREGATE BASE**

DRAWING NO. CAMBRIDGE-11

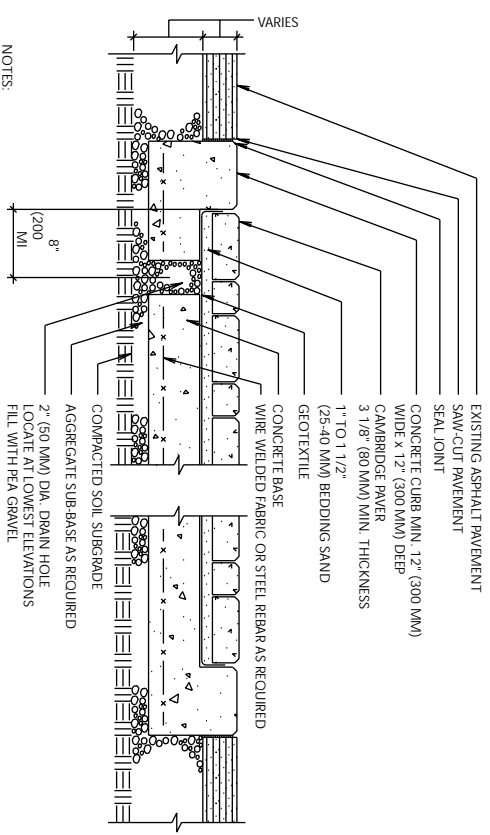
- NOTE: 1. DRAIN MAY BE NECESSARY IN SOIL SUBGRADE.



**CONCRETE CURB AND GUTTER WITH CAMBRIDGE PAVERS**

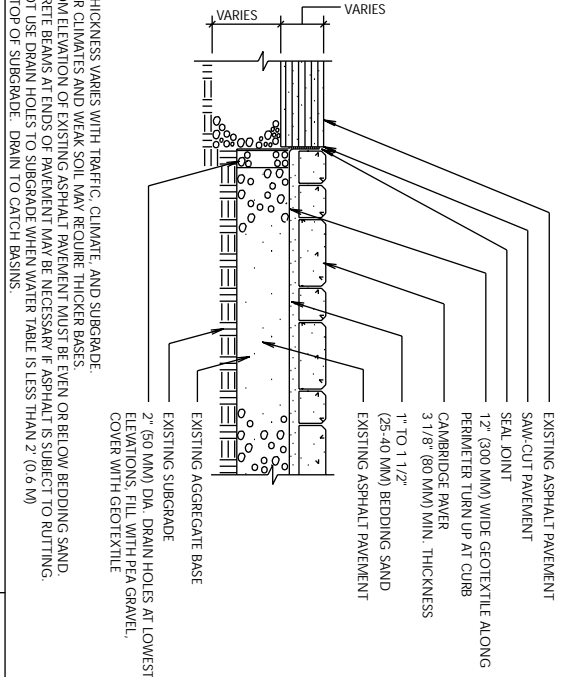
DRAWING NO. CAMBRIDGE-10

- NOTES:
1. BASE THICKNESS AND REINFORCING VARIES WITH TRAFFIC, CLIMATE, AND SUBGRADE CONDITIONS.
  2. CONCRETE BASE MINIMUM 2% SLOPE FROM CENTRALLINE TO CURB.
  3. DO NOT USE DRAIN HOLES TO SUBGRADE WHEN WATER TABLE IS LESS THAN 2' (0.6 M) FROM TOP OF SUBGRADE. DRAIN TO CATCH BASINS.



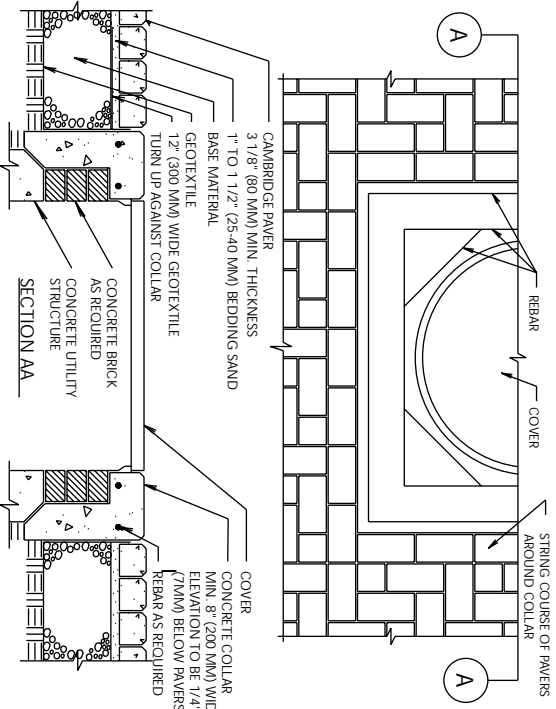
**CROSSWALK ON CONCRETE BASE**

DRAWING NO. CAMBRIDGE-12

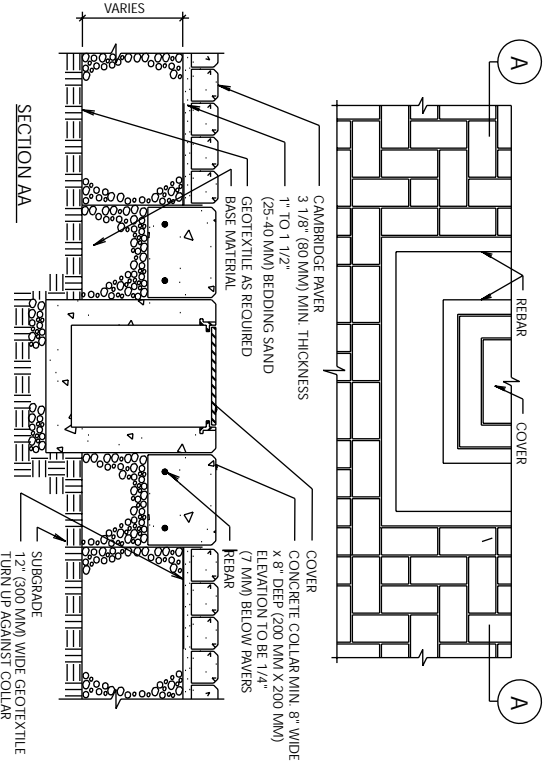


- NOTES:
1. BASE THICKNESS VARIES WITH TRAFFIC, CLIMATE, AND SUBGRADE.
  2. COLDER CLIMATES AND WEAK SOIL MAY REQUIRE THICKER BASES.
  3. BOTTOM ELEVATION OF EXISTING ASPHALT PAVEMENT MUST BE EVEN OR BELOW BEDDING SAND.
  4. CONCRETE BEAMS AT ENDS OF PAVEMENT MAY BE NECESSARY IF ASPHALT IS SUBJECT TO RUTTING.
- DO NOT USE DRAIN HOLES TO SUBGRADE WHEN WATER TABLE IS LESS THAN 2' (0.6 M) FROM TOP OF SUBGRADE. DRAIN TO CATCH BASINS.

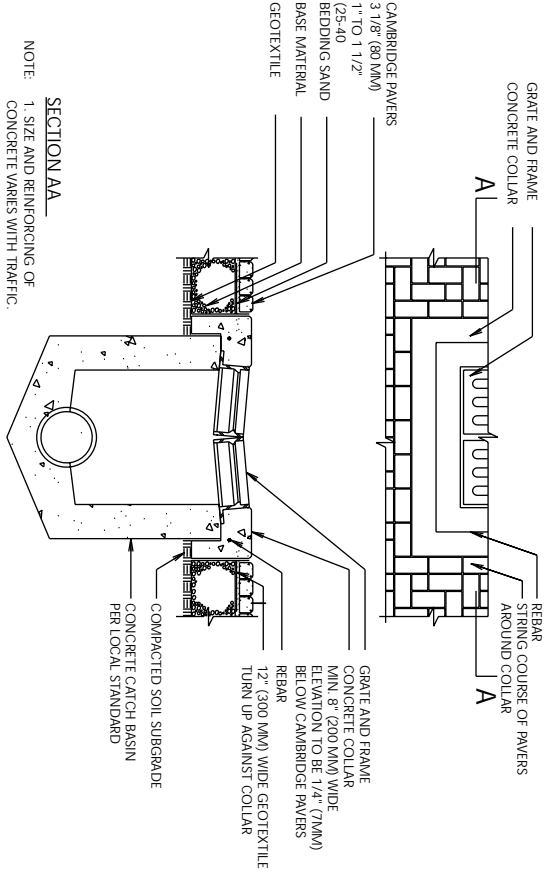
**CROSSWALK ON ASPHALT OR CEMENT TREATED BASE**  
 DRAWING NO. CAMBRIDGE-13



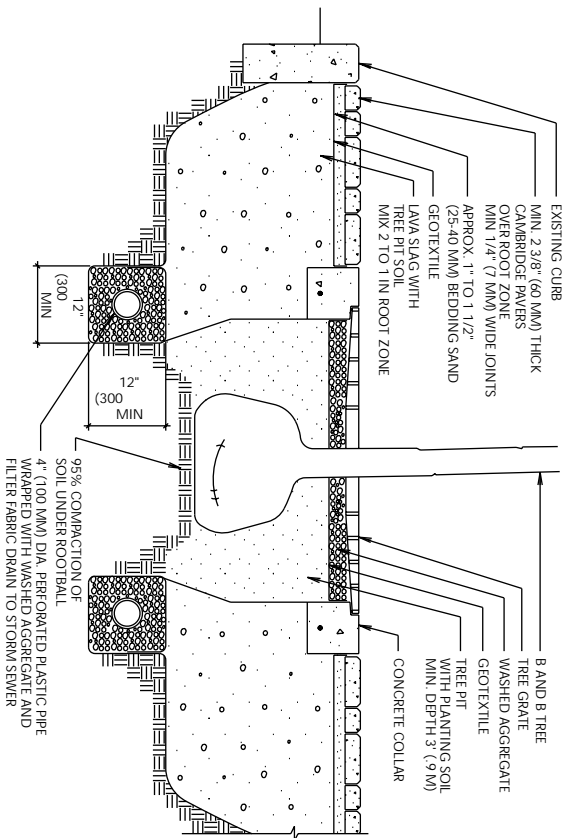
**UTILITY STRUCTURE**  
 DRAWING NO. CAMBRIDGE-14



**UTILITY STRUCTURE**  
 VALVE BOX \ PULL BOX \ LAMPHOLE  
 DRAWING NO. CAMBRIDGE-15

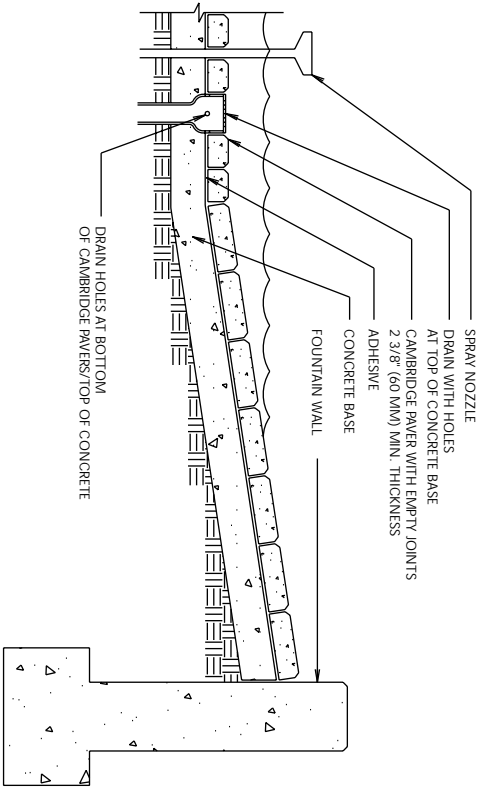


**CATCH BASIN**  
 NOTE: 1. SIZE AND REINFORCING OF CONCRETE VARIES WITH TRAFFIC.  
 DRAWING NO. CAMBRIDGE-16



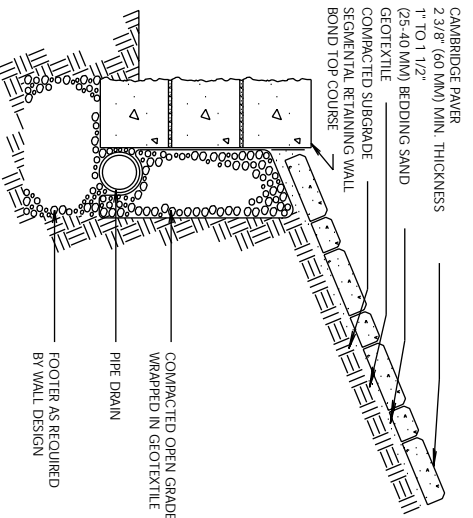
**TREE PIT - NON-COMPACTED**  
**ROOT ZONE UNDER CAMBRIDGE PAVERS**

DRAWING NO.  
**CAMBRIDGE-17**



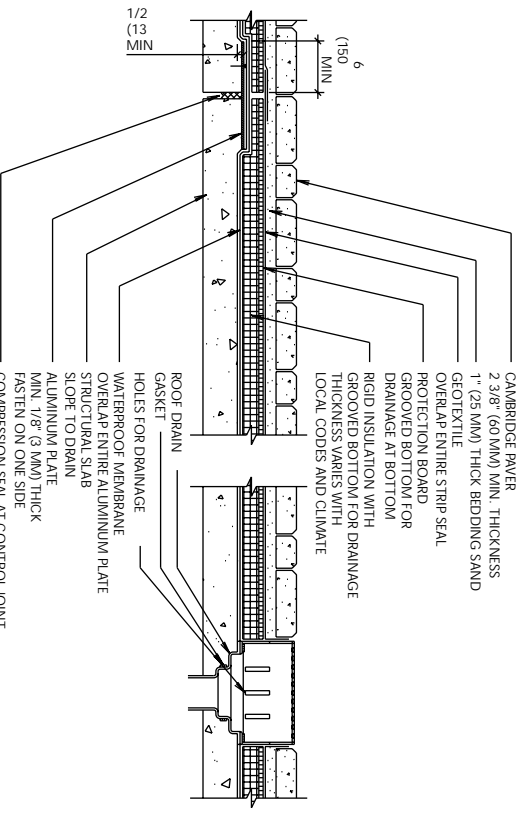
**FOUNTAIN**

DRAWING NO.  
**CAMBRIDGE-19**



**SLOPE PROTECTION**  
**CAMBRIDGE PAVERS**

DRAWING NO.  
**CAMBRIDGE-18**



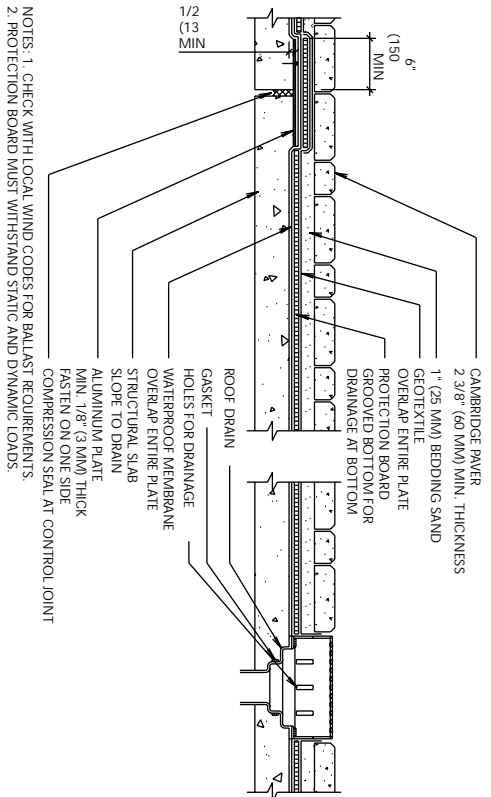
**ROOF DECK OVER HABITABLE SPACE**

DRAWING NO.  
**CAMBRIDGE-20**

NOTE: 1. CAMBRIDGE PAVERS CAN BE LAID WITHOUT ADHESIVE.

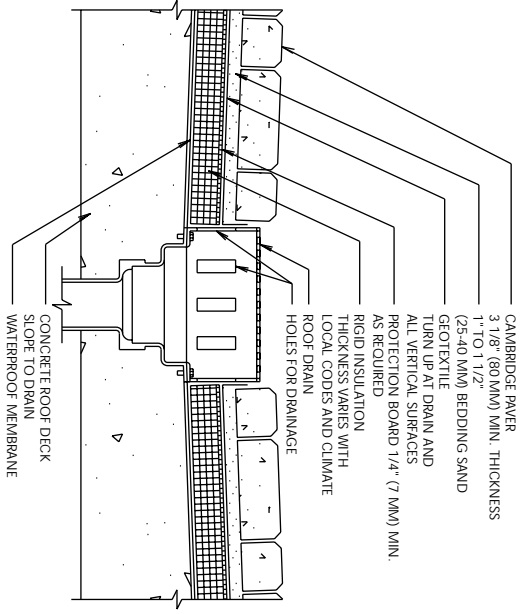
NOTES: 1. CHECK WITH LOCAL WIND CODES FOR BALLAST REQUIREMENTS.  
 2. PROTECTION BOARD AND INSULATION MUST WITHSTAND STATIC AND DYNAMIC LOADS.

NOTES:  
 1. MAXIMUM SLOPE SHOULD NOT EXCEED ANGLE OF REPOSE FOR BEDDING SAND.  
 2. PROVIDE EDGE RESTRAINTS ON SIDES OF INSTALLATION.  
 3. ENGINEERING OF THE SEGMENTAL RETAINING WALL IS REQUIRED WHEN HEIGHT EXCEEDS 4' (1.0 M).



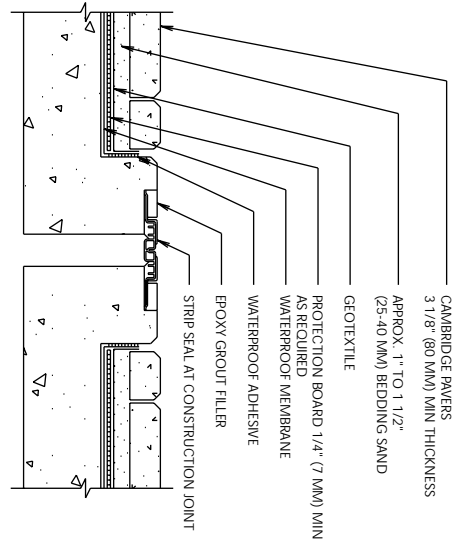
NOTES: 1. CHECK WITH LOCAL WIND CODES FOR BALLAST REQUIREMENTS.  
2. PROTECTION BOARD MUST WITHSTAND STATIC AND DYNAMIC LOADS.

**ROOF DECK OVER UNINHABITED SPACE**  
DRAWING NO. CAMBRIDGE-21

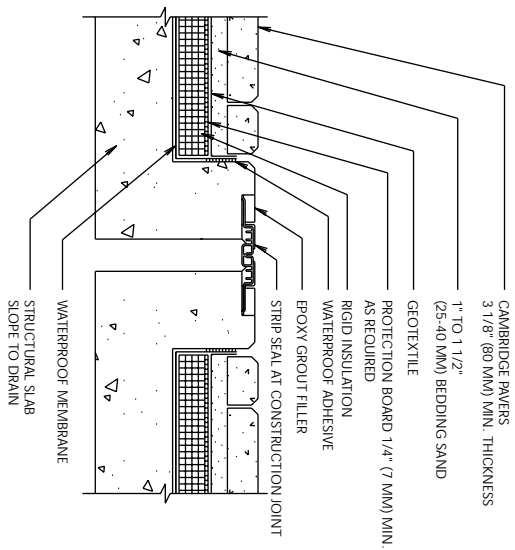


NOTES: 1. PROTECTION BOARD AND INSULATION MUST WITHSTAND STATIC AND DYNAMIC VEHICULAR LOADS.  
2. INSULATION MAY BE EXCLUDED FOR SOME APPLICATIONS OVER UNINHABITED SPACE.

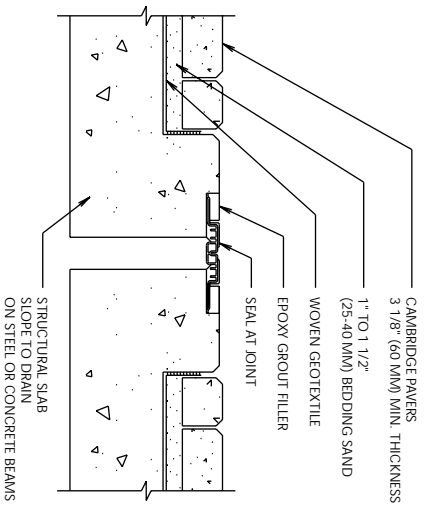
**PARKING GARAGE OVER UNINHABITED / UNINHABITED SPACE - DRAIN**  
DRAWING NO. CAMBRIDGE-23



**PARKING GARAGE OVER UNINHABITED SPACE - EXPANSION JOINT**  
DRAWING NO. CAMBRIDGE-22



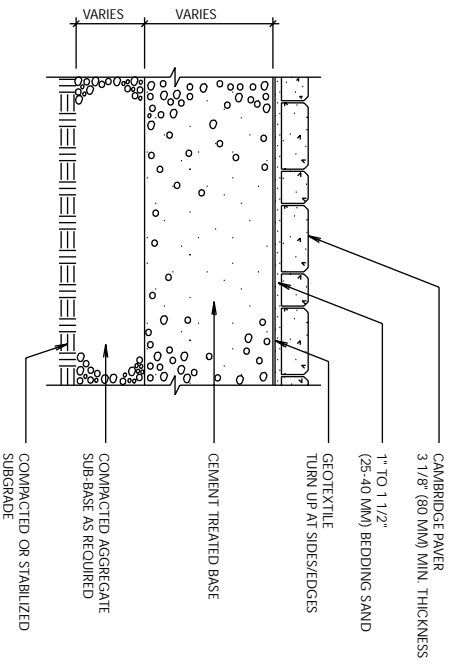
**PARKING GARAGE OVER UNINHABITED SPACE - EXPANSION JOINT**  
DRAWING NO. CAMBRIDGE-24



NOTE: 1. PROVIDE DRAINAGE OF EXCESS MOISTURE IN BEDDING SAND AT PERIMETER OF STRUCTURAL SLAB.

**BRIDGE DECK**

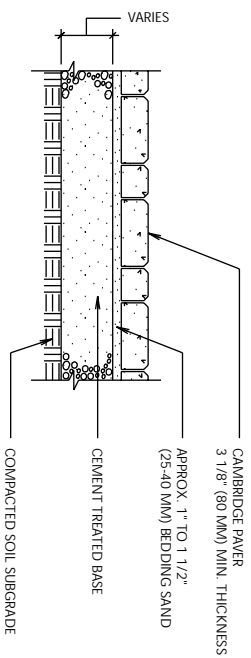
DRAWING NO. CAMBRIDGE-25



NOTE: 1. BASE, SUB-BASE, AND SUBGRADE THICKNESS VARY WITH LOADS; SUBGRADE STRENGTH, AND CLIMATE.

**PORT / INDUSTRIAL / AIRFIELD PAVEMENT W/CEMENT TREATED BASE**

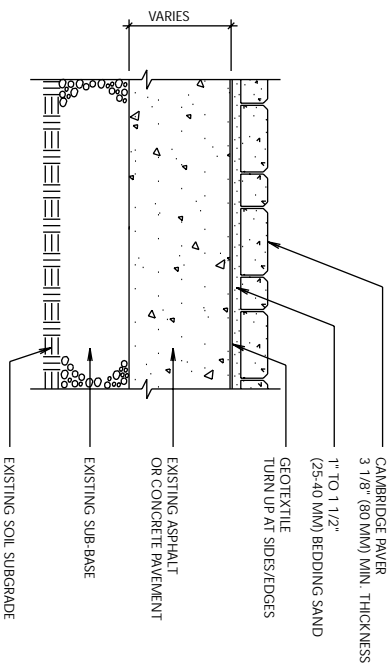
DRAWING NO. CAMBRIDGE-27



NOTES:  
1. BASE, SUB-BASE, AND SUBGRADE THICKNESS VARY WITH LOADS; SUBGRADE STRENGTH, AND CLIMATE.  
2. CAMBRIDGE PAVERS MAY BE INLAID ON EXISTING ASPHALT OR CONCRETE GAS STATION PAVEMENTS.  
3. SEALING JOINTS OF PAVERS IS RECOMMENDED.

**GAS STATION ON CEMENT TREATED BASE**

DRAWING NO. CAMBRIDGE-26

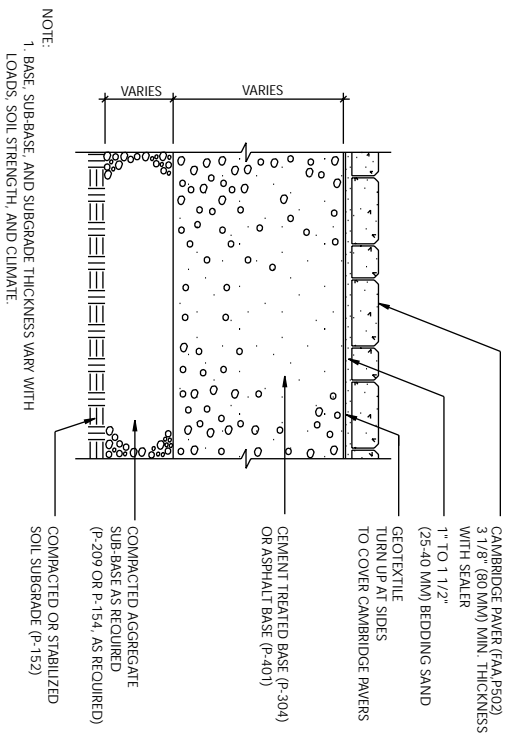


NOTES:  
1. EXISTING ASPHALT OR CONCRETE PAVEMENT SHALL BE THOROUGHLY INSPECTED FOR AREAS IN NEED OF PATCHING OR REPLACEMENT. CONDUCT ALL REPAIRS AND FILL ALL CRACKS GREATER THAN 1/4\" (7 MM) WIDE PRIOR TO PLACING GEOTEXTILE, SAND, AND CAMBRIDGE PAVERS.  
2. PROVIDE DRAINAGE OF SAND LAYER THROUGH GRAVEL-FILLED WEEP HOLES) OR CATCH BASINS).

**PORT / INDUSTRIAL PAVEMENT ON EXISTING ASPHALT OR CONCRETE**

DRAWING NO. CAMBRIDGE-28

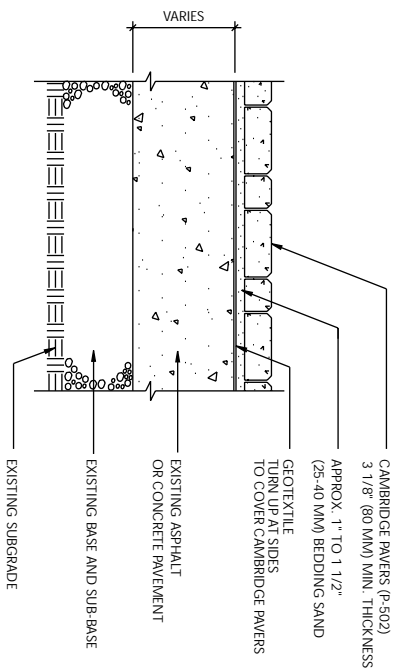




NOTE:  
1. BASE, SUB-BASE, AND SUBGRADE THICKNESS VARY WITH LOADS, SOIL STRENGTH, AND CLIMATE.

**AIRFIELD PAVEMENT WITH CEMENT TREATED OR ASPHALT BASE**

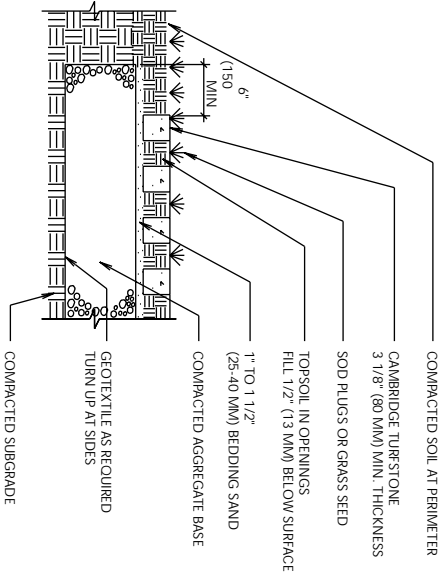
CAMBRIDGE-29



NOTE:  
1. EXISTING ASPHALT OR CONCRETE PAVEMENT SHALL BE THOROUGHLY INSPECTED FOR AREAS IN NEED OF PATCHING OR REPAIR. CONDUCT ALL REPAIRS AND FILL ALL CRACKS GREATER THAN 1/4" (7 MM) WIDE PRIOR TO PLACING GEOTEXTILE, SAND, AND CAMBRIDGE PAVERS.

**AIRFIELD PAVEMENT ON EXISTING ASPHALT OR CONCRETE**

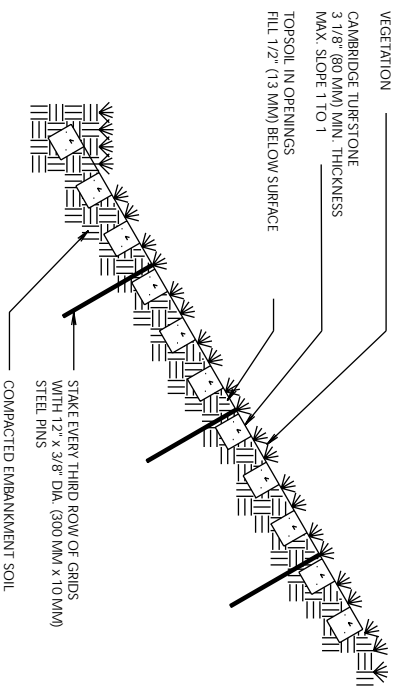
CAMBRIDGE-30



NOTES:  
1. BASE THICKNESS VARIES WITH TRAFFIC, CLIMATE, AND SUBGRADE.  
2. MINIMUM BASE THICKNESS: 6" (150 MM) RESIDENTIAL DRIVEWAYS, 8" FIRELANES & PARKING LOTS.

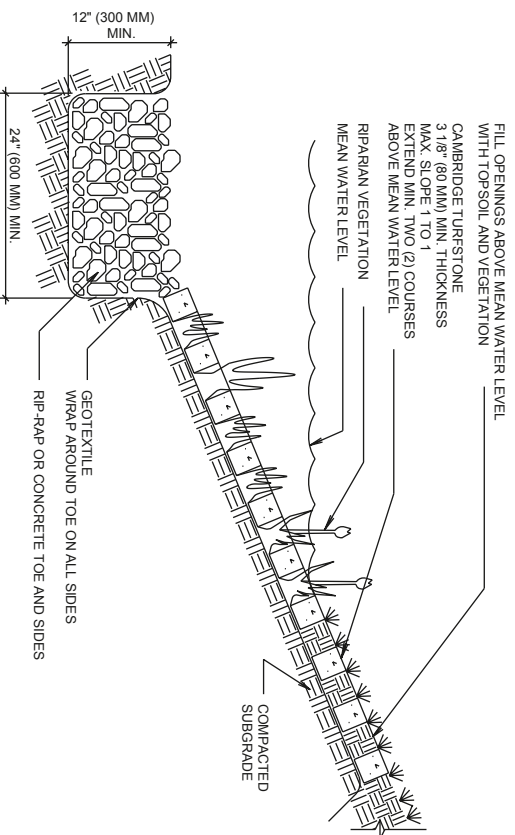
**CAMBRIDGE TURFSTONE-FIRELANE, DRIVEWAY & INTERMITTENT PARKING**

DRAWING NO.  
CAMBRIDGE-31



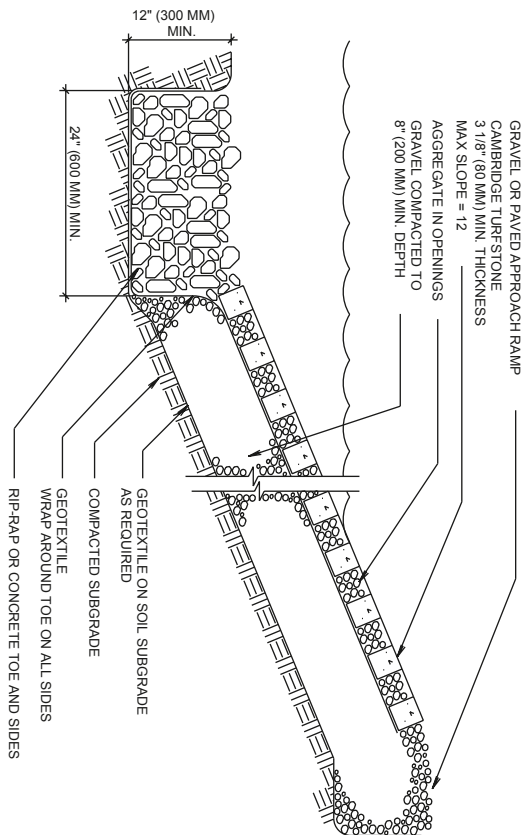
**SLOPE PROTECTION CAMBRIDGE TURFSTONE**

DRAWING NO.  
CAMBRIDGE-32



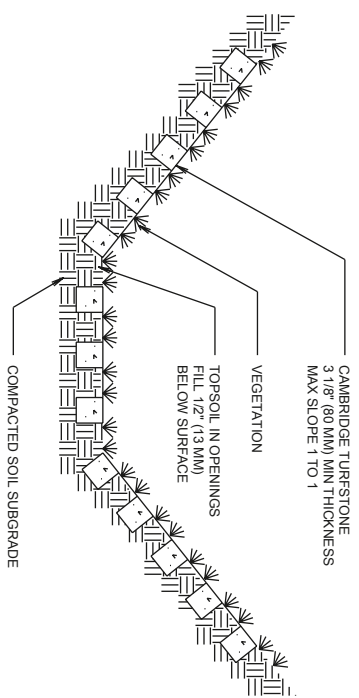
**RIPARIAN STABILIZATION**  
CAMBRIDGE TURFSTONE FOR STREAM BANKS AND LAKESIDES

DRAWING NO.  
CAMBRIDGE-33



**BOAT RAMP**  
CAMBRIDGE TURFSTONE

DRAWING NO.  
CAMBRIDGE-35



**DITCH LINER FOR INTERMITTENT FLOWS - CAMBRIDGE TURFSTONE**

DRAWING NO.  
CAMBRIDGE-34

NOTE: 1. AGGREGATE MAY BE USED IN OPENINGS OF GRID PAVERS.

**NOTE: ALL CROSS-SECTION DRAWINGS SHOWN ARE AVAILABLE ON CD-ROM.**

**Cambridge Pavingstones**  
With **ARMORTEC**  
[www.cambridgepavers.com](http://www.cambridgepavers.com)